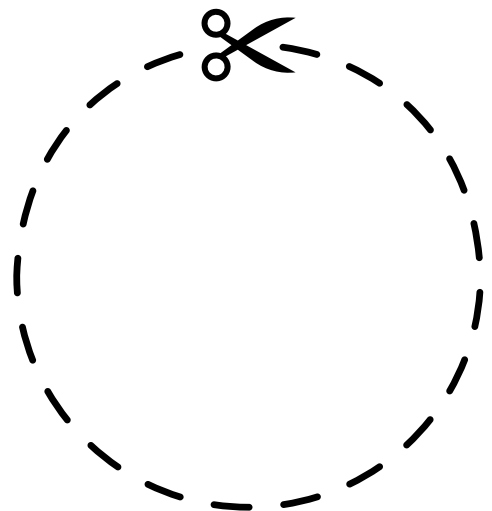
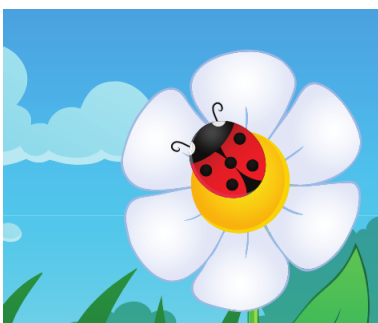
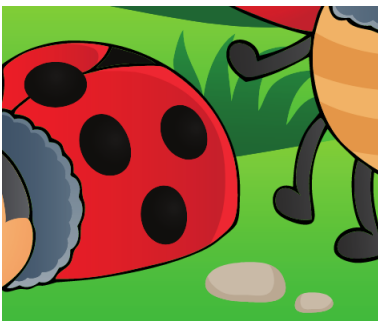
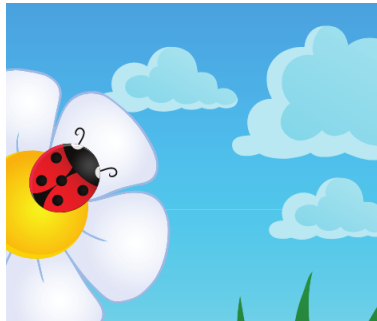
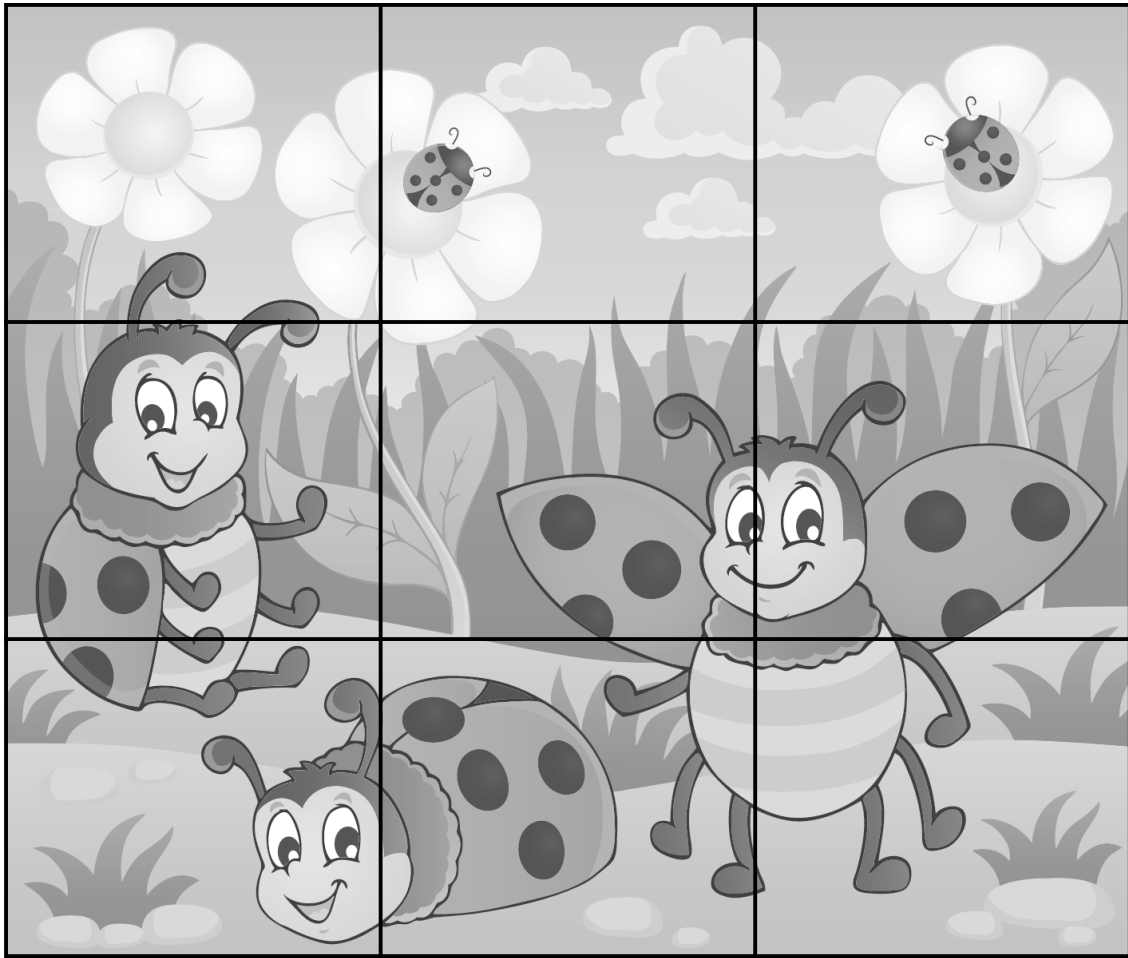


Aefum okkur að klippa 2



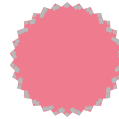
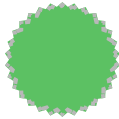
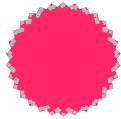
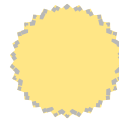
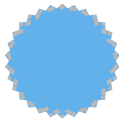
Púsl

Klipptu út og púslaðu myndina



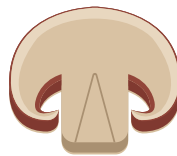
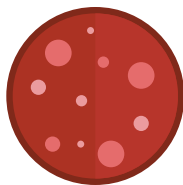
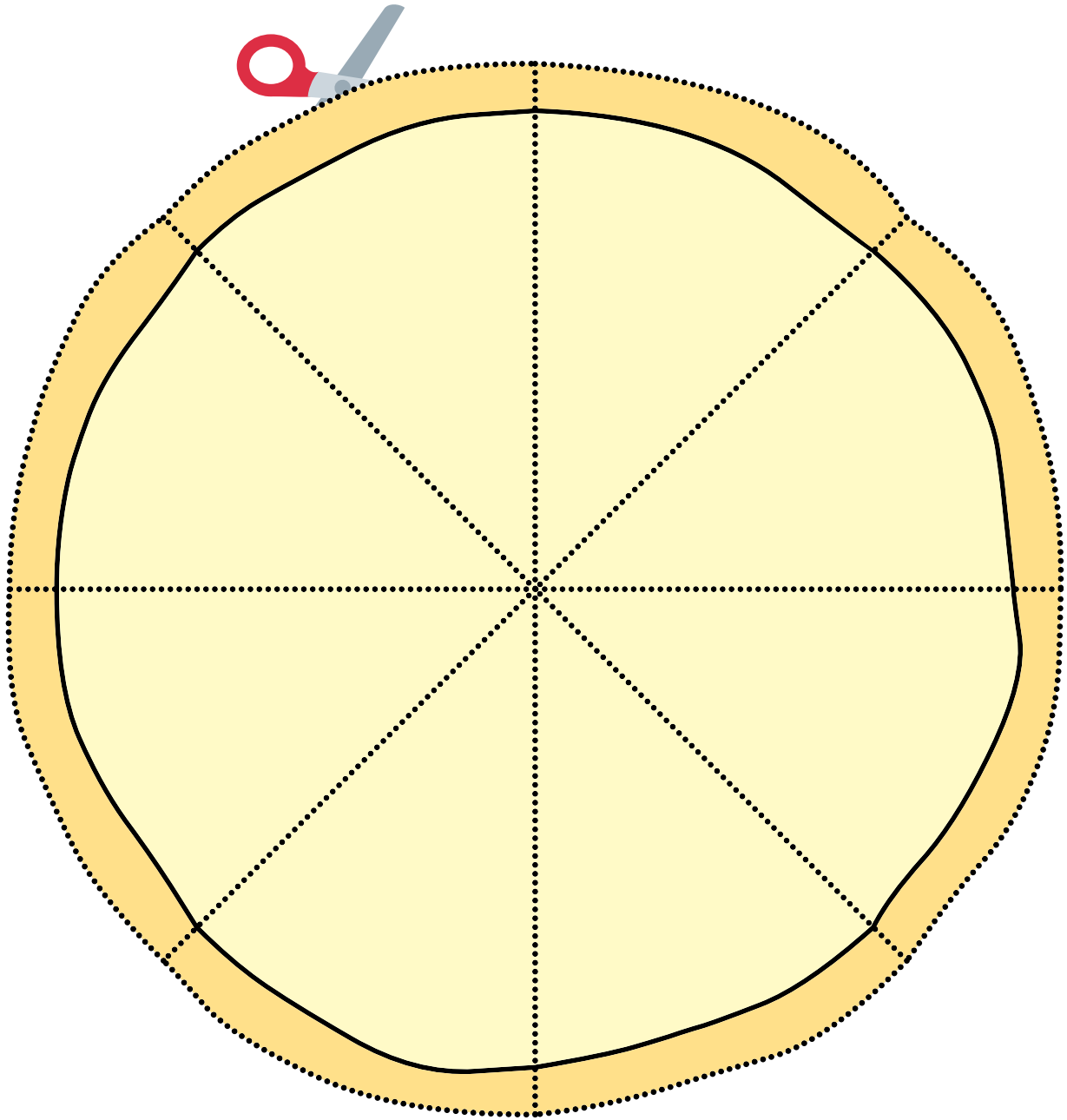
Litrikur ís

Klippið út og parið saman



Búm til pizzu

- Klipptu pizzuna með því að elta doppóttu línuna.

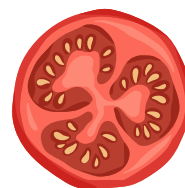
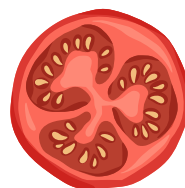
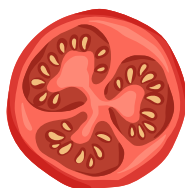
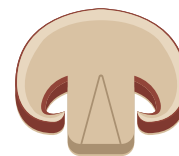
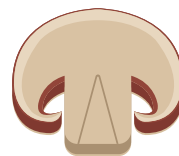
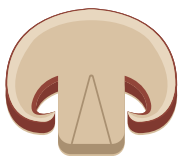
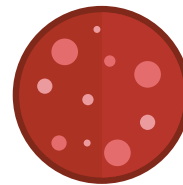
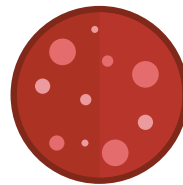
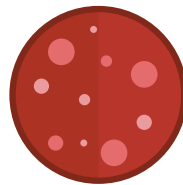
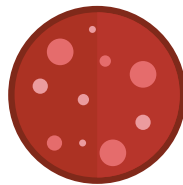
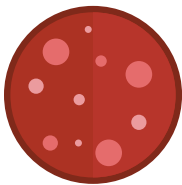


Álegg á næstu síðu



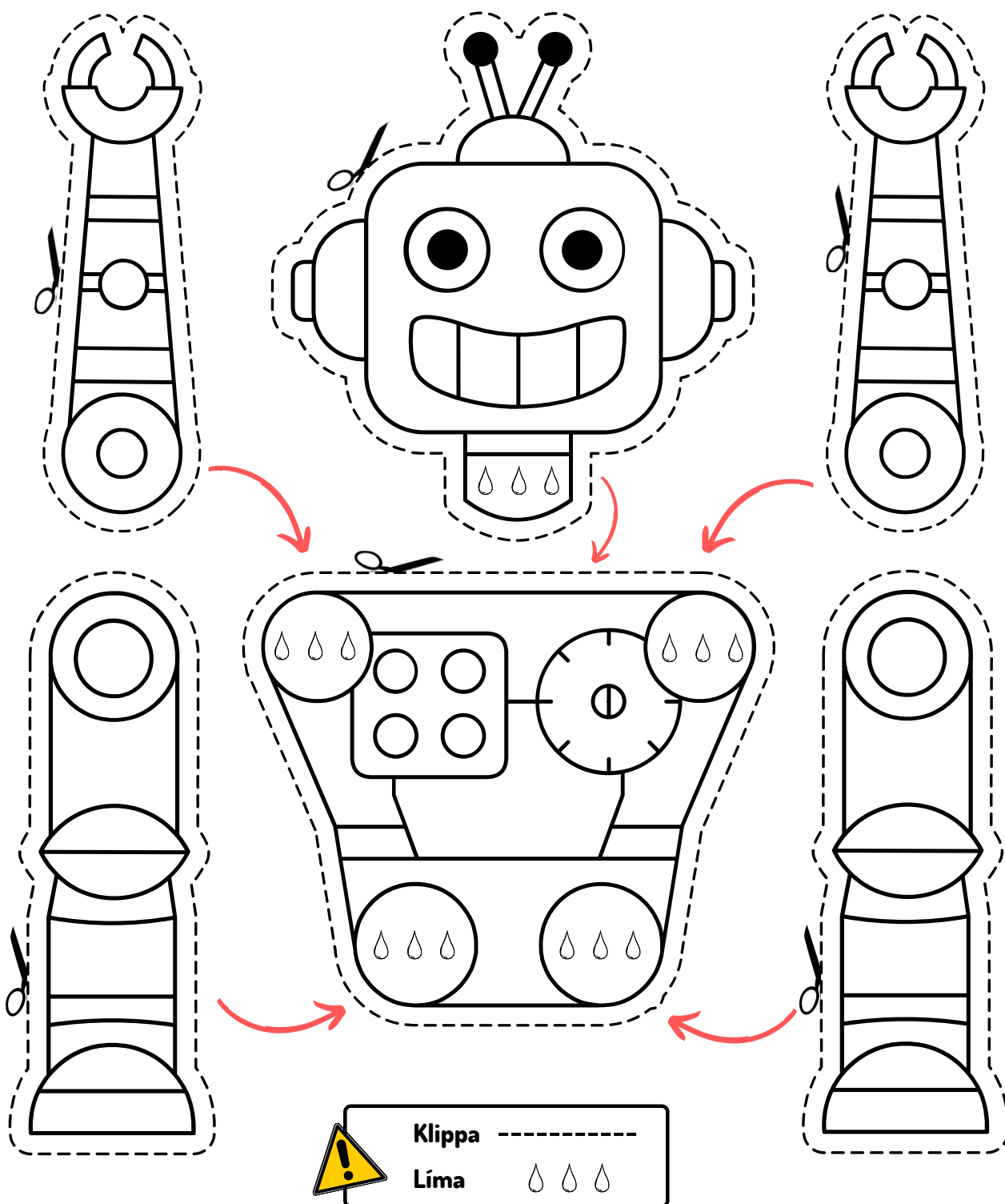
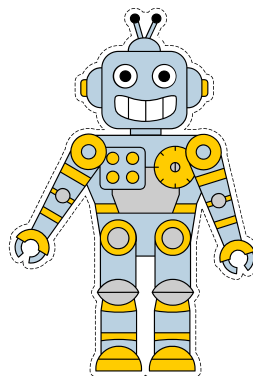
Búum til Pizzu

- Klipptu út álegg og límdu á pizzuna þína



VÉLMENNI

- Litaðu vélmennið
- Klipptu vélmennið út
- Límdu það saman



Klárið munstrið

Getur þú klárað munstrið? klipptu, límdu og litaðu.

